

2020-2021 ACADEMIC YEAR

AGM School Reopening & COVID-19 Prevention Plan



Updated February 5, 2021

WORKING TOWARD REOPENING



STAGE

1

DISTANCE
LEARNING

STAGE

2

HYBRID LEARNING

STAGE

3

CAMPUS
LEARNING



Guided by the interest of the health and safety of our students, the AGM team has adopted updated policies in preparation for reopening. This plan was created by the school administration in conjunction with the school staff, parent population, local church council, and the Board of Regents of Armenian Prelacy Schools.

The reopening plan consists of four main components and the success of each component depends on our families extending their the full cooperation and doing their part from home.



*Healthy
Operations*



*Healthy
Enviornments*



*Healthy
Hygiene
Practices*



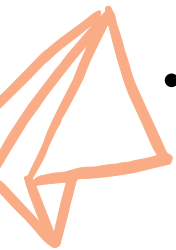
*Preparing for
Sickness*

The details of this proposal are subject to change in accordance with State, County & Board of Regents guidelines.

MAINTAINING HEALTHY OPERATIONS

SPACE PLANNING

- Students in each grade level (K-6th) will remain in their own grade levels for the entire school day. Students from each grade level will remain with their group in one classroom or outdoor space without co-mingling with other grade levels. Combination classes won't take place.
- All recess, lunch and other breaks will be on staggered schedules. Two separate outdoor spaces will be used to minimize contact of shared spaces. The sports field and courtyard will be used as outdoor lunch and recess spaces.
- Each class will have their own outdoor play equipment, not to be shared.
- Students will never move rooms, only teachers will move on a need-be basis.
- Group activities in the classroom will be limited. Each student will have their own set of supplies labeled with their names. Desks will be placed facing the same direction at the greatest distance possible.
- Part day instruction can be held outside if weather permits. 3 new outdoor seating spaces have been created.



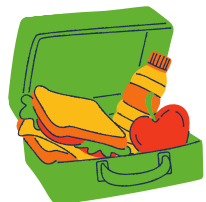
MAINTAINING HEALTHY OPERATIONS

SPACE PLANNING

- Due to its larger square footage, the current library is being repurposed into a classroom space to accommodate larger class sizes while respecting social distancing. The former 3rd grade will be the new library.
- Communal spaces will be temporarily closed. (Library, STEAM lab).

FOOD SERVICE

- The food service will also undergo changes. All lunch tickets must be bought online. Lunch will be pre-packed in individual containers. Students will not be able to refill plates or customize their meal portions.
- Food brought from home must be packed in a disposable paper bag and thrown away after lunch.
- Meals will be eaten at staggered times and will be outdoors unless the weather does not permit. Each grade level will eat in their own isolated location while sitting spaced apart.
- Disposable gloves must be used by the teacher/staff when handling food items.



MAINTAINING HEALTHY OPERATIONS

DROP OFF/PICK UP

- Pick up and Drop-off locations will be from different sides of the campus. Entrance and exit routes (on McFadden & Euclid) will be designated for parents with clear directions placed in our parking lot.
- Parents/guardians will not be allowed to enter the campus for drop off and pick up. Teachers will be outside to help escort children out of their vehicles.
- If a parent needs to meet with the administration or a teacher they must first set up an appointment to avoid overcrowding in the office. Email or zoom communication is preferred.
- Pick up and drop off times are allotted 30 minutes to allow for staggering and avoid crowding.



GATHERINGS

- Guest speakers and visitors will be temporarily suspended.
- Student Assemblies and performances will be temporarily suspended. Morning and after-school prayers and pledges will be conducted in each individual classroom.
- Field Trips will be temporarily suspended.
- All after-school activities (chess club, KAHAM sports, etc.) will be temporarily suspended.

MAINTAINING HEALTHY ENVIRONMENTS

- The EPA approved list of disinfectant products will be used for cleaning.
- Fragrance-free hand Sanitizers will be made available in each room (with min 60% alcohol) and can be used with adult supervision.
- Frequently touched surfaces (door handles, sink handles, light switches, tables, chairs, etc.) will be cleaned mid-day/as needed. Most of the disinfecting during the school day will be done while children are outside. Gloves will be worn by the teacher or support staff when disinfecting frequently touched surfaces. Teachers will disinfect their entire rooms with a fogger 2x/week.
- A cleaning crew will be on site every day after-school for thorough cleaning & disinfection of all rooms and restrooms. Cleaning crew will be equipped with proper protective equipment, including gloves, eye protection, respiratory protection, and other appropriate protective equipment as required by any cleaning product instructions. All cleaning products will be out of reach for students.
- Drinking fountains will be closed. Students can refill their bottles from refill stations. A new station is being installed upstairs.
- Water bottles brought from home should be clearly labeled. Extra water bottles will be made available in our office in case a child loses or forgets their water, however students should not rely on this supply.
- Personal Protective Equipment will be provided to our staff.
- Adequate supplies of cleaning products have been purchased and stocked in preparation for opening.
- Classroom doors and windows will be left open to allow for increased air circulation. Please dress children in appropriate layers to account for temperature changes. Air purifiers are placed in each classroom.

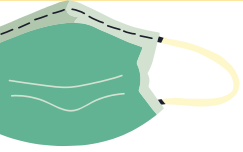


HEALTHY HYGIENE PRACTICES

- Students & staff entering school will be required to wash their hands each morning before going to class.
- Students will have their temperature taken before entering school with a non-touch thermometer. Staff must conduct self-checks and sign a form indicating they do not have a temperature. Visual wellness checks will be conducted throughout the day and temperatures will be checked mid-day as well.
- Families are recommended to take temperatures daily before heading to school. Anyone with a fever of 100.4 or higher, or any other Covid-19 symptoms should not come to school. Absences due to illness or the need to quarantine will be excused.
- Hand washing will be reinforced throughout the day for each class.
- Touchless faucets and soap dispensers are installed in all restrooms. Students and staff will wash their hands for at least 20 seconds with soap.
- Students will be taught how to use tissues to wipe their nose and to cough/sneeze inside a tissue or their elbow.
- Staff will be required to wear face coverings at all times. Face shields can be used to allow students to see teachers' faces for phonological instruction only when teaching from a safe distance. If teachers need to get closer than 6 feet, a mask must be used. Staff will be trained on the proper ways of handling and removing face masks, and will teach the protocols to their students.



HEALTHY HYGIENE PRACTICES



- Staff will wash/sanitize hands before entering a new classroom, and will wipe/disinfect work area before leaving their classroom.
- Preschool-6th grade students will be required to wear a face mask at all times except when eating, drinking, naptime for pk, and outdoor play time when six feet distancing is possible.
- Students can remove masks at PE during structured activities where they are adequately spaced apart and outdoors.
- Please send two clean face masks with your child everyday (one on/one backup).
- Disposable face masks should be changed daily. Face masks must fit correctly covering the nose and mouth in the appropriate size. An extra face mask in a Ziploc bag labeled CLEAN kept in backpacks. School will provide a disposable face mask as needed/when necessary.
- Students or staff with a medical exemption for face masks should wear a non-restrictive alternative, such as a face shield with a drape on the bottom edge, as long as their condition permits it.

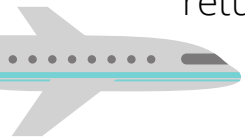
PREPARING FOR ILLNESS

- Existing student health documents will be reviewed to identify students who may need additional accommodations.
- Students or staff who show a temperature of 100.4 or other symptoms: Fever, Cough, Shortness of breath or difficulty breathing, Chills, Repeated shaking with chills, Fatigue, Muscle pain, Headache, Sore throat, Congestion or runny nose, Nausea or vomiting, Diarrhea, New loss of taste or smell- will be required to immediately wear a mask and wait in a pre-designated isolated room until they are picked up. A supervising adult who will not be in contact with other children or staff will wait with the student. Students must be picked up within 40 minutes.
- The classroom in which the symptomatic child or teacher was in will be evacuated. The remaining students will go outdoors or into the main hall. The classroom must be cleared for at least 24 hours and thoroughly cleaned before students return.
- Any student with symptoms associated with Covid (listed on pg.11) who do not have a known exposure, must be PCR tested and present a negative Covid test to return to campus as well as be symptom free without medication for 24hrs before their return. Students in this situation can join instruction via distance learning while home. Teachers will have their materials ready to be picked up after 24hrs notice.
- Should a student/staff who test positive, the school must be immediately notified to determine next steps.
- Should a member of the student/staff family test positive, the school must be immediately notified to determine next steps.
- Should any student/staff/or member of their respective families have confirmed Covid exposure, the school must be notified to determine next steps.

PREPARING FOR ILLNESS



- A roster of trained back-up staff will be ready if teachers/staff need to stay home. Self-guided distance learning will be implemented for students who need to stay home for quarantine.
- Incidents of possible exposure will be documented by the principal, staff and families will be notified of any positive case, while maintaining confidentiality as required by FERPA. Communication will be via email, phone and the school-wide Bloomz communication app.
- If a student or staff member test positive for COVID, protocols for school closure will be decided by administration and Orange County Health Department when necessary. The school will immediately transition to Distance Learning should closure be necessary.
- All students/staff that travel outside of the state, must quarantine at home for 10 days after they arrive. Students should prepare ahead of time, if they know to be traveling, to resume on distance learning once they return.
- All staff will be tested once a month and as needed. Staff will be referred to a their primary care provider or community testing site. However, our school has also partnered with a lab to help expedite and streamline the testing process.
- The school principal will serve as the liaison to help coordinate monitoring and communications to local health officials, as well as the school community. The principal will monitor and report positive cases, and track whether the school approaches the 5% threshold during a 14-day period.



Student or Staff with Symptoms (No known exposure)

- Send home along with siblings
- Testing required
- Negative test required + symptom free for 24 hours w/o medication before returning
- School/classroom remain open

Student/Staff with Confirmed COVID-19

- Notify the local public health department/school
- 10 day quarantine and/or until symptoms resolve without medication for 48hrs. (No less than 10 days).
- Testing required
- Stable groups or cohorts (††) that are effected by positive case transition to distance learning for 10 days. In certain instances, this can mean whole school (i.e. positive cases amongst siblings across various grades.)

- **Grades 3+ will be a stable group with class cohorts based on teacher movement**
- **Grade 2 will be a stable group with class cohort based on teacher movement**
- **Grades K/1 will be a stable group with class cohorts based on teacher movement**
- **Preschool classes are in their own stable groups.**

Student/ Staff Close Contact (†) with COVID19 case

- Stay home
- Testing required
- 10 day quarantine for all family members
- Negative test does not shorten quarantine
- School/classroom remain open
- Determine school notification

COVID19 symptoms include:

Fever or chills
Cough
Shortness of breath or difficulty breathing
Fatigue
Muscle or body aches
Headache
New loss of taste or smell
Sore throat
Congestion or runny nose
Nausea or vomiting
Diarrhea

(†) A contact is defined as a person who is <6 feet from a case for >15 minutes.

In some school situations, it may be difficult to determine whether individuals have met this criterion and an entire cohort, may need to be considered exposed.

(††) A cohort is a group with fixed membership that stays together for all courses and activities (e.g., lunch, recess, etc.) and avoids contact with other persons or cohorts. A stable group is a group of cohorts who have shared teachers.

COVID Positive Student (no sibling)

Stable group goes remote 10 days

Rest of school to remain open

COVID Positive Student w/ COVID Positive Sibling in Different Stable Groups

All associated stable groups remote 10 days (this can mean whole school).

COVID Positive Teacher/Staff

Associated stable group goes remote 10 days

Teacher Exposed to COVID Positive Case:

Teacher quarantines 10 days

Teacher must test

Negative test = associated group remains on campus

Positive test = associated group goes remote

Student/Parent Exposed to COVID Positive Case

Student must test

Student quarantine/remote 10 days

Positive = associated group goes remote

Negative = associated group remains on campus

COVID Positive Student w/ Negative Sibling in Different Stable Group

Positive group-remote 10 days.

Negative group-remain on campus

****All siblings in a family that have a confirmed case or have been exposed to a confirmed case must quarantine for minimum of 10 days regardless of individual test results. ***

****Negative test results only warrant return to campus when there hasn't been known COVID exposure. Those that have been exposed to a confirmed case or have a confirmed case in their home must quarantine regardless of receiving a negative test result*****

Whole School Closure

More than 25% staff within a 10 day period

More than 5% of student population confirmed or probable cases within a 10 day period

School Closure for 14 days mandated.

CONCLUSION & RESOURCES

These guidelines have been published with the understanding that all school stakeholders will fully adhere to them. Failure to do so could result in workplace illnesses that may cause classrooms or the entire school to be temporarily closed or limited.

The local health department for communicating information about COVID19 outbreaks among students or staff is the Orange County Healthcare Agency (833) 426-6411.

The school website URL where the reopening plan and waiver are posted is:
www.agminassianschool.org



CDC:

<https://www.cdc.gov/coronavirus/2019-ncov/community/schools-childcare/index.html>

School Guidance:

https://www.cdph.ca.gov/Programs/CID/DCDC/CDPH%20Document%20Library/COVID-19/Consolidated_Schools_Guidance.pdf

CA School HUB:

<https://schools.covid19.ca.gov/>

Cal/OSHA:

<https://www.dir.ca.gov/dosh/coronavirus/>